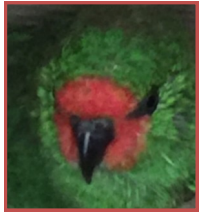
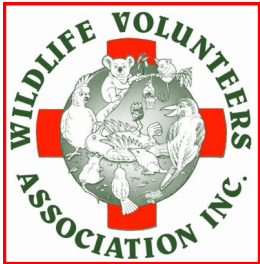


WILVOS Wildlife Whisperings



**NOVEMBER
2017**

Wildlife Volunteers Association Inc (WILVOS)
PO Box 4805 Sunshine Coast Mail Centre Q 4560
Ph: (07) 5441 6200 www.wilvos.org.au
PLEASE NOTE CHANGE OF POSTAL ADDRESS.

*Wishing
you all a
safe, happy
and healthy
Christmas.*



WILVOS CHRISTMAS PARTY

1 - 4 PM Sunday 26th November 2017

Yandina Historic House
Pioneer Road Yandina

Everyone is welcome to join this gathering. It is a lovely relaxed atmosphere sitting outside under the gazebo (Inside if weather isn't friendly!)

John and his helpers spoil us with tea, coffee and snacks and we cannot thank them enough for their hospitality and generosity. We get to meet new people and talk wildlife most of the afternoon!

What I love most—there is no work to do! It is the one WILVO event of the year where we can put our feet up and relax.

Please RSVP with the names of those attending. This is necessary, by the due date, for catering purposes.

RSVP: 18TH NOVEMBER 2017

**To
workshops@wilvos.org.au**

Thank you to Helen for taking on the workshop bookings chore. Julie threw a party to celebrate! So did I! This will be the first bookings operation for Helen so please help her by booking by the due date with names and numbers attending.

Are you an Active Carer or Hotliner?

Then I really hope you have checked out the Members Only page. This is exclusively for all WILVO members but especially important for our carers and hotliners.

It is a real nuisance for carers if they are on holidays and still keep getting calls to rescue wildlife. If carers are unavailable and have advised hotline@wilvos.org.au and membership@wilvos.org.au accordingly, then this shouldn't occur. Because of the great options offered by the WILVOS website, information is continually updated. It is even simple for me to upload my newsletters and Weekly articles.

Use your password to access the Members page. Leave it open so you can quickly check the most up-to-date Phone Contact List should you get a call to rescue wildlife. Rachel does an amazing job at keeping this list current. If you see any discrepancies please email Rachel at hotline@wilvos.org.au

There is plenty of resource material to read on the Members page so utilize this. It is there to benefit our wildlife. Extra information will be added regularly. Your input and stories are always welcome. Again, email the amazing Rachel!

The WildMan Wildlife Management System will eventually replace the antiquated Fauna and Phone Returns System. Check it out on the Members Page and start using it. It's also great for logging in hotline calls while on roster. There is then a continuous log of all calls so we can check back when someone asks the outcome of one of the animals, about which they called the Hotline.

If you have lost your password then follow the usual prompts to reset your password. If you have recently joined and don't yet have a password, then please email membership@wilvos.org.au and request same. Sylvia will verify your membership status and pass on to the appropriate department.

If you have any problems, do ask for help. It is really important to utilize these resources. We will hold a workshop on the WildMan record system early next year, but meanwhile become familiar with it. Use it now if you feel confident with it. I enjoy the challenge!.....Donna

These are one of my favourite Australian native trees. They may not look appetising but possums love the leaves. Everything loves the fruit high in vitamin C! Being a fig, it can have an 'enthusiastic' root system, but they grow very well in pots and handle the constant pruning of a wildlife carer!

Over 40 species of Ficus grow in Australia, and in 2010 Dr Dale Dixon, who is mentioned in the following article, had discovered another five species.....Donna

Bush Tucker Articles

Sandpaper Fig Greg Calvert

I am disappointed in the fact that many people seem to regard the Sandpaper Fig as a bit of a weed. In a well designed garden which attracts lots of birds, the Sandpaper Fig will often appear. It doesn't take an expert botanist to identify a Sandpaper Fig. In fact, most people can do it blindfolded, due to the rough coarseness of the leaves. The leaves do vary considerably in shape, from a pretty standard sort of broadly lanceolate shape to a sharply pointed thin leaf with long lobes at the base. Botany student, Dale Dixon, is currently examining Sandpaper Figs at James Cook University and will hopefully be able to shed light on why the leaf shape varies so much at some stage in the future.

I was always at a loss to explain why some Sandpaper Figs grew into large, shady trees while others remained small shrubs, until Dale found that Sandpaper Figs were not bisexual like many of their close relatives, but had male and female on different trees. Since then I have made some closer observations and found the following:

Very large trees never seem to set ripe fruit. I had always assumed the birds were taking them before they ripened, but now I believe they are male plants and the fruits never get past the hard, green stage.

Smaller plants are females. They produce soft black fruit with a skin so thin you often break it just by touching it. At full maturity the fruit exudes a clear substance and at this stage the fruit is one of the nicest eating bush tuckers and surprisingly rich in Vitamin C, energy and most minerals, with moderate levels of other nutritional elements.

The term "fruit" is actually incorrect. Botanists prefer to call them "syconium" or "fleshy receptacle", as they contain the flowers of the plant which must be pollinated by tiny, specialised wasps. A true fruit should derive from the ovary of a pollinated flower, rather than containing the flower itself.

Aborigines found many other uses for Sandpaper Figs apart from eating those heavenly syconiums. Of course, they used the leaves for polishing wooden objects, such as spears and boomerangs, and a quick look around will often find several plants with different coarseness of leaves. This was also used as a cure for ringworm. The skin would be abraded with the leaves and the milky latex applied to the area requiring treatment. This is apparently quite effective.

Dry straight stems of this tree were used for fire sticks and it is one of the few plants suitable for this purpose. If you do not have the right wood to start with, you will not even get the wood warm, let alone start a fire! The inner bark can also be used to make string.

So there you have it; a supermarket tree. It attracts birds, can be used for shade, food, medicine, tools, fire and string to make nets and traps. And some people call it a weed!

(Reproduced from "The Native Gardener", Newsletter of SGAP Townsville Branch, March 1998.)

Don't think that foliage fed to our animals in care has to be a plant such as a syzygium (lilly pilly), grevillea or callistemon.



Sandpaper fig

They may look delicious but they are popular suburban plants and we need to look further to what our marsupials, birds and reptiles will eat in the wild.

Leaves are all important as marsupials will eat any flower. They are treat food, not to be the main basis for a balanced diet. Like chocolate!

Not all the favourite foods of our wildlife look delectable to us. The above sandpaper fig is always popular, as are the banksia species.

If you don't have a big yard then look at the smaller species of banksia. Another popular fruit with our

Midgen berry



wildlife is the midgen berry. I've fed them to 'blue tongues' that have come into care and they seem to approve! Gliders, possums and some birds also like them. It is a low growing spreading shrub that any small backyard can support.

If you can't provide the exact same plants that are growing at the release site, you can feed enough varieties to make your animals look for a variety of foliage ie leaves, seeds and flowers.

Possums love the fine leaves on this compact Banksia shrub.



Please send through any hotline, rescue, rehabilitation or backyard wildlife stories for Rachel to share on the website or on the new WILVOS Facebook page. Some of these stories may be sad, some funny - but all are equally important to share. Advise if you would like to remain anonymous.

Attention carers and prospective hotliners: Many of the animals that come into care with WILVOS members arrive as a result of the hotline. It is important that all volunteer carers assist with this vital role.

If you are not currently volunteering on the hotline, then could you please contact Rachel Aspinall hotline@wilvos.org.au to advise her of your availability. Assisting with the hotline is one of the most helpful and rewarding things we can do for our wildlife. It shares the workload and gives all WILVO carers an understanding of the importance of responding to the hotline calls for assistance. Roslyn is happy to conduct Hotline Training with anyone anytime!

When an often distressed member of the public has made the effort to contact WILVOS for assistance with an injured/orphaned animal, we should assist with **all** animals. Individual members may choose to specialise in rehabilitating a specific species; however as WILVO contact volunteers we should all be able to assist with collecting any animal and organising appropriate care. Once you've collected the wildlife from the member of the public or vet then if you don't wish to care for that particular species or don't feel confident, then call the appropriate co-ordinator or an experienced carer or committee member to arrange a suitable rehabilitator.

WE DON'T EVER, EVER, EVER SAY "NO" TO OUR CARING MEMBERS OF THE PUBLIC OR TO OUR WONDERFUL LOCAL VETERINARIANS.

WILDLIFE NEEDS TO BE PICKED UP AS SOON AS POSSIBLE. ARRANGEMENTS CAN BE MADE LATER AS TO WHICH REHABILITATOR WILL TAKE ON THE CARE OF THE ANIMAL. WE ALWAYS FIND A CARER WHO CAN TAKE 'ONE MORE.



A MOTHER'S LOVE! INSPIRING PHOTO OF TAWNY FROGMOUTH WITH CHICK

A lovely lady rang from Buderim concerned that this young chick was on top of her chook pen roof, but Mum was up in a tree nearby. I advised her to watch that they were later reunited. Mum did have to go out hunt and eat sometime, as well as feed the youngster.

The next morning I received this beautiful photo from this wonderful caring person, with permission to use the photograph. Another was sent a few days afterwards, almost as cute as this one.

It is always the best scenario when young are left to reunite with parents in these ideal instances.

EACH SUNDAY please email Marie birds@wilvos.org.au or/and Mae marsupials@wilvos.org.au with wildlife in care on the day. Each marsupial: Species/Sex/Weight Each bird: Species/Adult, fledgling, chick
MARIE IS HAPPY FOR YOU TO TEXT YOUR WEEKLY BIRD UPDATE TO 0419 7537 36 if this is easier for you than emailing. These ladies do a great job, trying to make it easy for YOU, so please report your wildlife in care weekly. Looking at the dates against names, some of you have been just a wee bit forgetful!

If you are not on these lists, or are a new member, then please email the above relevant Co-ordinator. Thanks girls! **We** just have to send one little email a week listing basic details. Marie and Mae have to compile it, so let's be a little considerate and set the alarm to send an email each week! Each Monday (birds) and Wednesday (possums) you will then receive an updated list of all carers with a list of their wildlife in care. This does help with those species that need grouping ASAP.

Thank you Christine Bennett for this recommendation from the website of Birdlife Australia

<http://birdlife.org.au/media/leave-that-chick-alone/>

WILVOS FOOD SUBSIDY

Please keep your receipts so you can claim a food subsidy if you qualify for same. If you wish to apply for a subsidy, please request a food subsidy claim form through enquiries@wilvos.org.au or post in a request for a form to the PO Box.

***Please fill in the form and attach receipts and a copy of your fauna returns for the time the subsidy is claimed. Otherwise there will be no response.**

PLEASE NOTE: To qualify for the food subsidy the following guidelines must be followed:

- Species Co-ordinator must have been advised when animals came into care—email details through each Sunday.
- Release Officer advised prior to release.
- Copies of fauna returns to be attached to the claims. (Originals to be sent in normally, to returns@wilvos.org.au, by post, or through the WildMan Wildlife Management System)
- The minimum of two WILVO workshops per year to be attended by carer, as is necessary to retain permit.
- The person claiming must be an active WILVO carer listed on the Contact List. People may belong to any number of wildlife care organizations but must decide with which one they are 'active'. This has been done at the request of other major wildlife rehabilitation groups in Queensland. Unfortunately, people were joining and sourcing benefits from a number of groups, but were accountable to none of them. Animals were not being registered with co-ordinators and release details were not recorded.
- A minimum amount of \$80, and maximum amount of \$300 has been spent over a 3 month period. The subsidy does not cover costs of expensive extra items such as mice, mealworms, crickets etc. It is the responsibility of carers to grow their own, or entice someone else to grow them for you! Similarly, with fruit/vegetables, carers should seek out sources from local fruit and vegetable suppliers. As these are a supplement only with most species, they should not form a major part of the diet of any wildlife in care. Marsupial carers will receive subsidy for their formula, not for items such as Impact.
- Subsidy will be assessed at the cheapest available price for the product.
- Formula or food not to be passed outside WILVOS.

It would naturally be expected that those receiving the subsidy reciprocate in some way to show appreciation to the organization ie doing at least one shift a month on the phone, as all carers are expected to do. We are all extremely busy but it lightens the load when the chores are shared.

If you have checked a kangaroo, bandicoot, possum or other wildlife for pouch young, or you have removed wildlife off the road, leave some indication that the animal has been checked. This may be some biodegradable material attached to animal, or some other marking system. Spray paint is not advisable as a container of paint could explode in a hot car!

This saves a few people from stopping for the same animal.



It will be Figbird season again soon so keep an eye open for those lovely native fruits—syzygium, fig etc. They can be frozen. A native diet is the preferred diet for our wildlife.

Bronwyn's Little Alien!

In August, Bronwyn West was given two rainbow lorikeet eggs, after a nest was somehow abandoned. The eggs were placed in a humidicrib and to Bronwyn's delight one hatched after a couple of weeks. It is now a fledgling. Well done!



Spray birds with mite and lice spray on arrival in your care, if this hasn't already been done.

EQUIPMENT/SUPPLIES :

Milk Powder, Teats, Bottles, pouches/car carry bags for possums and macropods, Insectivore, Oxbow Critical Care, or Charcoal Powder. Email/text Donna re availability or supplier.

Possum Boxes/Dreys available when animals reach size requiring same. Phone/Email Sylvia.

Teresa Wadey has hanging bags @ \$10ea jfuproductions@gmail.com 0403 618 026

Pet and produce shops may give a discount. Please show your Membership Card when buying food for wildlife.

The best food we can give our animals is what they would be eating in the wild. Supplement foods are just that! Needless to say there are some supplements such as Calcium that are necessary.

Please contact Terrie Ridgway if you need a release site for birds or reptiles. Terrie knows what lives in her area. Her property joins up with others to form an area that extends over a thousand hectares. PH: 0487 930 903

If you have visited the Member's Page of WILVOS website you would have read the latest Hotline stories. Terrie's story about the release of a koala was delightful. Don't forget to send in any interesting/funny/strange stories you encounter on the Hotline or at rescues. Email hotline@wilvos.org.au and they can go up on the website for everyone to read and enjoy.

The beautiful koala in the picture at right was photographed on the property next to Terrie's last week.



HOTLINE VOLUNTEERS ARE ALWAYS NEEDED BUT IT IS EVEN MORE DIFFICULT TO FILL IN THAT ROSTER AROUND CHRISTMAS AND NEW YEAR TIME.

If you could do just one shift a month it would be most appreciated. Email hotline@wilvos.org.au with a day or a night of the week that would suit you. This is done from your own home phone through a diversion system, so it really is quite a painless procedure. Support is always available should a number of calls arrive around the same time, or some tricky situation occurs where advice is needed to come up with a solution.

WELCOME NEW MEMBERS!

I am sure all our new members at our recent induction will enjoy their time with WILVOS in whatever capacity they may choose.

ONE REQUEST: Could everyone who recently joined as a carer on the contact list, or on the hotline, please send an email to each of the following;

hotline@wilvos.org.au

birds@wilvos.org.au

marsupials@wilvos.org.au

This will allow the coordinators to have your correct email address. Believe it or not, some people don't know their own email address, or write it down illegibly on their membership form, and it takes time and guesswork to finally work out the correct one!

There is more to *Saving Wildlife* than rehabilitating animals. Their habitat needs to be protected. Make a regular habit of checking your local Council's website for new developments that may impact on our wildlife. Then be proactive.

We all need to speak up on any issues affecting our wildlife—whether the present Adani controversy or any others.

Next time you have a ringtail possum and a brushtail possum in care, look carefully at their feet. You'll notice that the ringtails, as with koalas, have the first two digits opposing the other three. With brushtails, there is only one opposing. Colour can be very misleading and all their tails curl, which is why many of the possums are mistakenly called ringtails by members of the public who call our WILVOS hotline. Ringtails always have the white section at the end of their tail.

Regardless of what the possum or glider is called, always ask that the pouch be checked for more than one joey. Just in case it is a ringtail possum or a squirrel, sugar or feathertail glider. Even the brushtails occasionally have two joeys. Feathertails may have four!

Also, if giving photos to journalists, be very clear on what the species is in the photograph, and write it down. Recently there was a brilliant article with Mel Bell and her animals in care in the Hinterland Times. Unfortunately, there was a photo of a short-eared possum sadly sitting in a bowl of water, with no explanation on why the poor thing was there. It's not normal for them to go for a 'dip'! Next to the photos it said the animal was an antechinus. Mel had labelled all her photos but this was someone else's 'shot'. So if you see this article, being a marsupial carer, Mel **does** know the difference between a short-ear and an antechinus!





Waiting patiently as Room Service cleans their accommodation.

The reasons for wildlife coming into care is always of concern. I thought it was extra tragic that these two Little Corella chicks were removed from a hollow in a beautiful stand of eucalypts in between Meridian Plains sports grounds. The impact that we inflict on our wildlife is neverending and distressing. It appears no government at any level has the desire or the intestinal fortitude to address the problem of land clearing.

The Little Corella on the right was found at Stella Maris school. It was assumed the inclement weather led to his predicament.

Very emaciated, he was 100g lighter than the little 'pin-feathered' chick above. This Little Corella is still in quarantine. He came in very dirty and unkempt looking. Not allowed to socialize with my perfect snow white specimens at the moment! Donna



AUSTRALIA'S ABYSMAL RECORD AND SOME FACTS ON LAND CLEARING.

- * Around 5,000 square kilometres, of virgin bushland and advanced regrowth are cleared annually. In addition to destroying native wildlife, it is the major cause of salinity and causes around 14% of Australia's greenhouse gas emissions.¹
 - * Australia has lost 25% rainforest, 45% of open forest, 32% woodland forest and 30% of mallee forest in 200 years.²
 - * The effect of these changes has been considerable. Around 20% of Australian mammals, 7% of reptiles, 13% of birds are listed as Extinct, Endangered or Vulnerable.³ More than 100 species have gone extinct in NSW in the last 200 years.⁴
 - * Australia has one of the highest rates of tree clearing of any developed country historically. In the past, we've cleared more bush each year than poverty-stricken countries like Burma, Mexico, Zimbabwe, Nigeria and the Congo.⁵
 - * Currently 1,000 animal and plant species are at risk of extinction, including the koala.⁴
 - * In 2014–15, the woody vegetation clearing rate in Queensland was 296,000* hectares per year (ha/year), similar to the 2013–14 woody vegetation clearing rate of 295,000 and over three and a half times what it was in 2009.⁶
- | | | |
|-----------------------------|-----------------------------|-----------------------------|
| 2009–2010: 83,000 hectares | 2010–2011: 92,000 hectares | 2011–2012: 155,000 hectares |
| 2012–2013: 261,000 hectares | 2013–2014: 295,000 hectares | 2014–2015: 296,000 hectares |

Reference:

The Wilderness Society blog

Forest Network

Commonwealth (1998a); The Wilderness Society blog

Department of Environment, NSW

Forest Fact Sheet

Queensland Government report

*Clearing rates are rounded to the nearest 1,000 hectares per year

Here in South-East Qld. we are keeping Australia's reputation for land clearing intact. We are a disgrace.



As I proofread this newsletter, a text has just come in from a friend to say there is devastation on my doorstep. Just down the road on the Cnr of Steggalls Rd & Carnival St there is nothing left there except machinery, large logs and mulch. Over the years I have observed so much wildlife in that pocket of habitat. How many of those animals are now mulch? This sickens me and those who keep approving the clearing of forested land sicken me even more. If it's springtime with breeding wildlife, so what????!! Foreign visitors say they enjoy our wildlife as in their country wildlife has disappeared with the thoughtless land clearing that has occurred there. Australia could learn from the mistakes of other countries, but we don't. We put the almighty dollar before any other consideration. People are also at fault. Offer the lottery winner a hundred hectares of beautiful wildlife habitat or a top of the range Art Union house and many would take the latter. Meanwhile, we will keep our extinction rates.

Wildlife Volunteers Association Inc. (WILVOS) Co-ordinating Team for 2017/18

Please direct your calls to the relevant people when making enquiries

ie Membership enquiries to Sylvia (Or advice, complaints, praise!)

THANK YOU TO ALL MANAGEMENT TEAM MEMBERS & HELPERS THROUGHOUT THE YEAR.

*** Management Committee			
FUNCTION	E-MAIL	OFFICER	PHONE
***WILVOS Chair	chair@wilvos.org.au	Sylvia Whiting	5446 7760 0400 125 807
WILVOS Minute Secretary & ***Vice Chair (1)		Joyce Thompson	5441 7658
***Vice Chair (2)	enquiries@wilvos.org.au	Donna Brennan	0413 861 757
WILVOS Community Awareness WILVOS Phone Training	awareness@wilvos.org.au	Roslyn Ann Leslie	5485 0056
WILVOS Enquiries	enquiries@wilvos.org.au	Donna Brennan	0413 861 757
WILVOS Environment	environment@wilvos.org.au	Lyndall Pettett	
WILVOS Fundraising		Rosemary Dax	5475 4455
WILVOS Grants Officer	grants@wilvos.org.au	Keith Campbell	0408 457 601
WILVOS Info	info@wilvos.org.au	Donna Brennan	0413 861 757
WILVOS Membership	membership@wilvos.org.au	Sylvia Whiting	5446 7760 0400 125 807
WILVOS News Editor/Media/PR	newsletter@wilvos.org.au	Donna Brennan	0413 861 757
WILVOS Releases	releases@wilvos.org.au	Paul Smith & Ash	5443 8315
WILVOS Data Returns	returns@wilvos.org.au	Kay Dawson	
***WILVOS Secretary	secretary@wilvos.org.au	Leslie Ayling	5441 7421 0437 637 404
***WILVOS Treasurer	treasurer@wilvos.org.au	Annette Buchanan	0418 194 695
WILVOS Workshop Bookings	workshops@wilvos.org.au	Helen Stewart	

Co-Ordinators

WILVOS Bats	bats@wilvos.org.au	Terrie Ridgway	0487 930 903
WILVOS Birds	birds@wilvos.org.au	Marie Walton	0419 753 736
WILVOS Hotline	hotline@wilvos.org.au	Rachel Aspinall	5478 6389 0407 881 008
WILVOS Macropods	macropods@wilvos.org.au	Sylvia Whiting	5446 7760 0400 125 807
WILVOS Marsupials	marsupials@wilvos.org.au	Mae Connor	
WILVOS Raptors		Jackie Fraser	5499 9057
WILVOS Reptiles	reptiles@wilvos.org.au	Lewis Rohun	0412 128 608

MEMBERSHIP WAS DUE 30.06.17 PAY NOW TO RETAIN PERMIT

PLEASE RETURN THE INVOICE WITH YOUR PAYMENT.

If there are any changes to any details on the invoice, please add these but still please return the invoice. It is much more convenient for Sylvia to consult the hard copy file when enquiries are made re members details.

For any payment by EFT then please put your SURNAME and MR as reference for membership renewal, as stated on WILVOS Membership Application form, or our Treasurer Annette has no idea from where the payment has come.

To become a wildlife carer you must hold a rehabilitation permit and meet standards described in **Code of Practice—Care of Sick, Injured or Orphaned Protected Animals in Queensland**

www.ehp.qld.gov.au/wildlife/caring-for-wildlife

<http://wildlifehealthaustralia.com.au/Resources.aspx>

Visit & subscribe to this website for the latest in wildlife information and resources. All wildlife carers would benefit from subscribing. WHA has the most up-to-date information available on wildlife health.

AUSTRALIAN WILDLIFE HOSPITAL DETAILS:

When receiving wildlife from AWH please follow up by advising them when an animal dies, is released, or is passed to another carer. Quote Accession no. from pink slip and, if applicable, details of next carer.

hospital@wildlifewarriors.org.au or phone 5436 2340



PLEASE HAVE YOUR SAY ON THE FUTURE OF THE TURTLES THAT NEST IN THE VICINITY OF THE
PROPOSED SEKISUI HOUSE DEVELOPMENT.

If undelivered please return to:
Wildlife Volunteers Assoc. Inc
PO Box 4805
Sunshine Coast Mail Centre Q 4560

SURFACE
MAIL

POSTAGE
PAID
AUSTRALIA

Print Post approved
PP100019524
WILVOS WILDLIFE WHISPERINGS
November 2017



Thank you to the Sunshine Coast Regional Council for their grant to WILVOS for the next three years as part of their Environment Levy Partnership Grant. This is a major contribution to ongoing necessary costs in a volunteer organization.

Our thanks to Laurie and Tom Wall for their continuing support of WILVOS, always providing us with a stall at the ever-popular Collectorama Fair at the Nambour Showgrounds. This event is held four times a year and visitors come from all over Australia. The antiques and collectables on sale are just amazing.

Thank you to all Rosemary's helpers at this event and the many others. As always Bob Whiting transports everything in and does multiple trips up and down the stairs before doing the same the next day and taking what is left home. The help of Kevin, Keith, and John is also most appreciated—it means we girls can do minimum trips up and down the stairs!

Thank you to all who have supported WILVOS in the past year. Enjoy the Christmas and New Year holidays with family and friends and let us hope that 2018 begins kindly for us and our precious wildlife.